

<h2>Lubricators</h2>	<h2>OL series</h2>
----------------------	--------------------

Thank you for selecting KONAN product.
Before installation and use of the products, please read this Service Instructions for proper handling.

Standard Specifications

Model code	Standard type	OL21-04			OL2-08		OL2-14		OL2-20	
	Corrosion-resistant type	OL21S-04			OL2S-08		OL2S-14		OL2S-20	
Port size		8A	10A	15A	20A	25A	32A	40A	50A	65A
		Rc 1/4	Rc 3/8	Rc 1/2	Rc 3/4	Rc1	Rc1 1/4	Rc1 1/2	Rc2	Rc2 1/2
Bowl oil capacity		200cc			250cc		1500cc		1500cc	
Operating pressure		0.05~0.7MPa								
Proof pressure		1.05MPa								
Spray condition		IN-to-OUT pressure differential to be 0.003MPa or more								
Operating temperature		General purpose 5~60°C / Heat-resistant 5~100°C								
Mass		0.64kg		0.7kg		10.0kg		10.5kg		

- NPT type pipe screw is available.
- For specifications other than those listed above, please contact us.

Before Installation

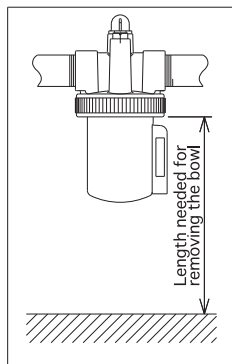
- Do not leave the units unpacked at the place where they are exposed to water and dusts.
- Do not remove the plugs at the ports until just before piping.

Handling Precautions

(1) Installation site

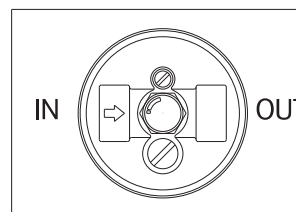
- Install the unit as far from the air source as possible.
- Do not use the unit at the place where aluminum corrosion is anticipated or the unit is exposed to salt water and other liquids.
- Avoid installation of the unit at the site affected by frequent vibration and shock.

(2) Mounting

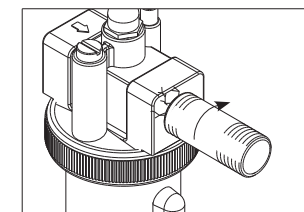


- For maintenance, install the unit so that the bowl of the lubricator can be removed. Refer to the product drawing for the length needed for removing the bowl.
- Install the unit so that the bowl is placed downward.

Piping Precautions



- Make sure to properly connect the ports.
- Use piping elements (pipes and tubes) with the port size same as or larger than the nominal diameter.



- When connecting piping elements (pipes and joints), be careful not to screw in excessively (4- to 5-thread screwing is enough).
- After piping sufficiently perform air flushing to remove dusts, rusts, sealing scraps, oil, etc.

Drain Exhaustion

(1) Adjust the volume of oil drop as follows:

Increase the volume: Turn the adjustment screw counterclockwise.
Decrease the volume: Turn the adjustment screw clockwise.

For the first time of oil drop after installation, drop more than the standard volume of oil.

After adjustment tighten the locknut.

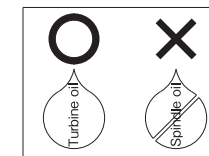
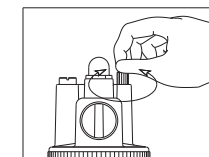
(2) Lubrication

To add oil to the lubricator, remove the plug from the lubrication port and fill the oil. Oil can be added to the lubricator even during operation.

It is recommended that oil be added at regular intervals on the basis of the oil consumption volume calculated from the frequency of line operations.

(3) Type of lubricating oil

JIS K2213 (ISO VG32 or VG46) type turbine oil is recommended.
(Do not use spindle oil.)



Recommended lubricating oil (as of 2019.10)

Idemitsu Kosan Co.,Ltd.	Daphne Turbine Oil 32
JXTG Nippon Oil & Energy Corporation	Turbine Oil 32
Shell Lubricants Japan K.K.	FBK Turbine 32
EMG Lubricants G.K.	Shell Turbo Oil T32
COSMO OIL LUBRICANTS CO., LTD.	Mobil DTE Oil Light VG32
	Cosmo Turbine Super 32

- See back page for disassembly/assembly procedure.
- For questions please contact the nearest Konan branch office.

Konan Electric Co., Ltd.

URL=<https://www.konan-em.com/>

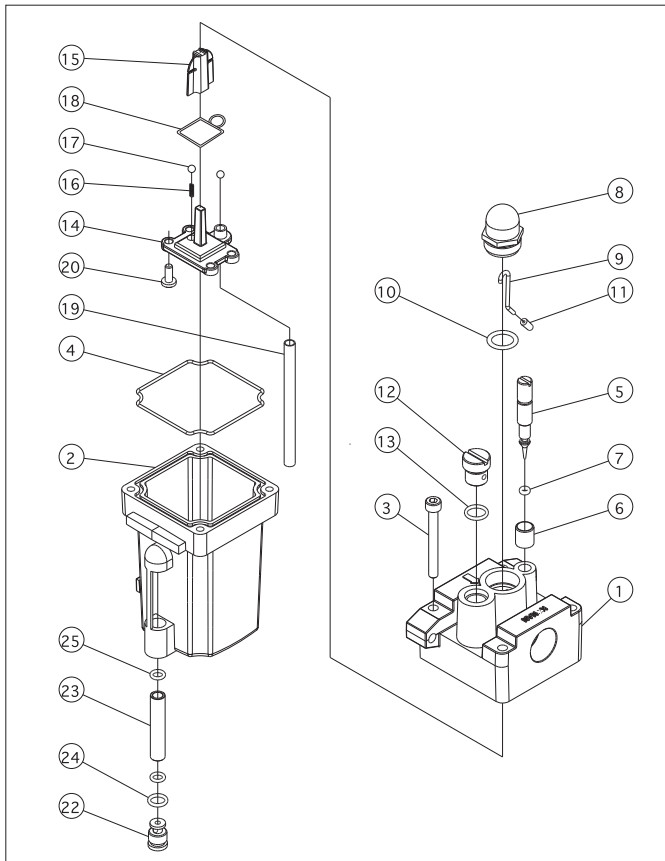
Tokyo Branch
Shiba-Sanesu-Wakamatsu Bldg.
7-8, Shiba 4-chome, Minatoku,
Tokyo 108-0014, Japan
Phone:03-3454-1711 Fax:03-3454-8699

Osaka Branch
Hankyu Terminal Bldg.
1-4, Shibata 1-chome, Kitaku,
Osaka 530-0012, Japan
Phone:06-6373-6701 Fax:06-6373-6740

Seibu Branch
Momiji Hiroshima Hikarimachi Bldg.
12-20, Hikarimachi 1-chome, Higashiku,
Hiroshima 732-0052, Japan
Phone:082-568-0071 Fax:082-568-0072

International Operation Division
4-97, Uedahigashimachi, Nishinomiya,
Hyogo 663-8133, Japan
Phone:0798-48-5931 Fax:0798-40-6659

OL21-04 · OL21S-04

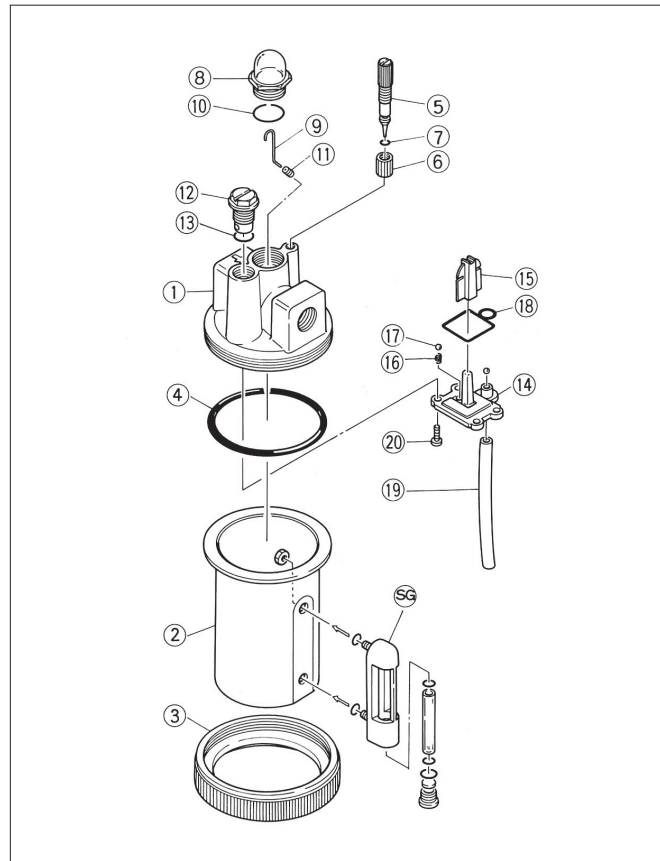


■Parts List

No.	Description	Q'ty
1	Body	1
2	Bowl	1
3	Hex socket head cap screw	4
4	Gasket	1
5	Adjustment screw	1
6	Locknut	1
7	O-ring	1
8	Sight glass	1
9	Drip tube	1
10	O-ring	1
11	Packing A	1
12	Lubricating plug	1
13	O-ring	1

No.	Description	Q'ty
14	Fitting	1
15	Rubber plate	1
16	Spring	1
17	Ball	2
18	Packing B	1
19	Syphon tube	1
20	Cross-recessed pan head machine screw	4
22	Bottom cover	1
23	Syphon glass	1
24	O-ring	1
25	O-ring	2

OL2-08 · OL2S-08

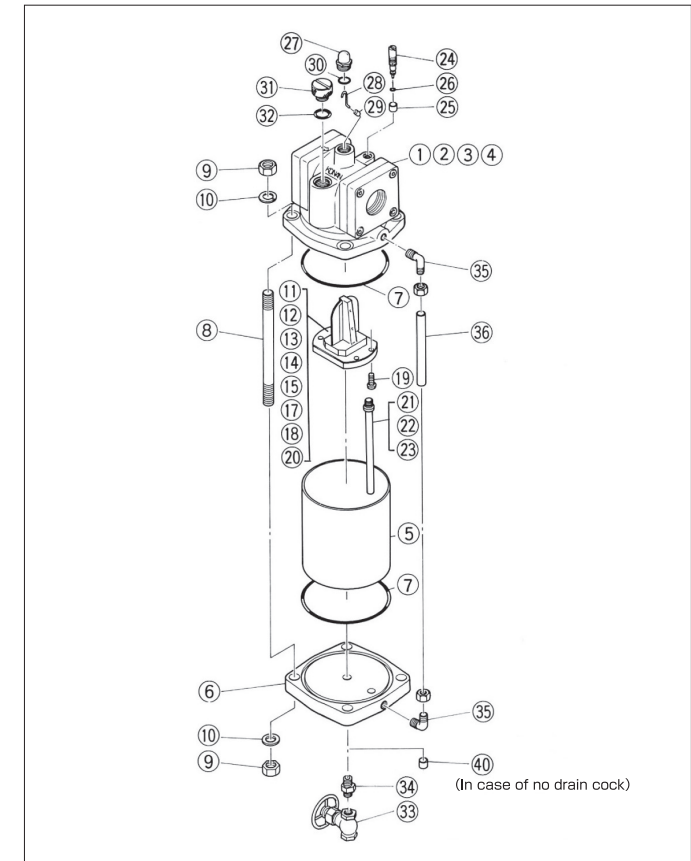


■Parts List

No.	Description	Q'ty
1	Body	1
2	Bowl	1
3	Clamp ring	1
4	Gasket	1
5	Adjustment screw	1
6	Locknut	1
7	O-ring	1
8	Sight glass	1
9	Drip tube	1
10	O-ring	1
11	Packing A	1

No.	Description	Q'ty
12	Lubricating plug	1
13	O-ring	1
14	Fitting	1
15	Rubber plate	1
16	Spring	1
17	Ball	2
18	Packing B	1
19	Syphon tube	1
20	Cross-recessed pan head machine screw	4
SG	Sight glass assembly	1

OL2-14 · OL2-20 · OL2S-14 · OL2S-20



■Parts List

No.	Description	Q'ty
1	Body	1
2	Flange	2
3	Gasket	2
4	Hex socket head cap screw	8
5	Case	1
6	Bottom cover	1
7	Gasket	2
8	Tie rod	4
9	Nut	8
10	Spring washer	1
11	Fitting	1
12	Rubber plate	1
13	Plate clamp	1
14	Ball	1
15	Spring	1
17	Plate	1
18	Cross-recessed pan head machine screw	2
19	Cross-recessed pan head machine screw	4

No.	Description	Q'ty
20	Packing	1
21	Joint	1
22	Pole	1
23	Syphon tube	1
24	Adjustment screw	1
25	Locknut	1
26	O-ring	1
27	Sight glass	1
28	Drip tube	1
29	Packing	1
30	Packing	1
31	Lubricating plug	1
32	O-ring	1
33	Drain cock	1
34	Nipple	2
35	Elbow	2
36	Gauge tube	1
40	Hex socket plug	1